



XL-300P: BEYOND BOUNDARIES

The Next Evolution in Converged Communications.



XL-300P

The Latest Member of the XL-Family to offer the **FIRST EVER P25, 5G, and DIRECT-to-DEVICE** Satellite Capabilities

Always Connected



FIRST P25 Radio with 5G



FIRST radio to offer Integrated SATCOM



The **MOST** Bands for Private LTE



B48

LMR All-band UHF/VHF/700/800



~6 sec roaming for leading convergence

Always Secured



Advanced Encryption and Security

FIPS 140-3 LEVEL 3



Always Ready



GPS over Broadband for faster location tracking



Voice Commands for safer operations



Integrated keypad for gloved hand operation



Modernized User Interface for streamlined interaction



XL Converge 300P

Always Connected. Always Secure.
Always Ready.



UNMATCHED CONNECTIVITY:

- High performance multiband: VHF, UHF, 700/800 MHz
- Future-proof 5G modem w/ integrated satellite NTN connectivity
- Best-in-class P25/5G/4G LTE/Wi-Fi/SAT Smart Roaming

IRONCLAD SECURITY:

- FIPS 140-3 Level 3 Compliant Security
- Multi-Key AES & DES Encryption
- Remote radio keying over broadband and P25

FIELD-FIRST DESIGN:

- Voice Controls for hands-free operation
- Powerful and intuitive user interface
- Ruggedized MIL-STD 810H and IP68 complaint design

XL-300P Overview



DELIBERATE CONTROLS:

Updated knob design delivers a firmer, more intentional feel to reduce accidental knob/switch movement in the field.

RUGGED, HIGH-VISIBILITY DISPLAYS:

Gorilla Glass across displays improves scratch resistance, durability, and readability in harsh environments.

SUPERIOR LOCATION PERFORMANCE:

GPS transceiver improves acquisition time by 15% to strengthen situational awareness and team coordination.

GLOVE-READY OPERATION:

Large, integrated, glove-friendly keypad improves overall operability, especially for users in cold weather, tactical gloves, or turnout gear.

BUILT FOR RELIABILITY:

Ruggedized MIL-STD 810H and IP68 complaint design platform improve robustness and simplifies serviceability.



ENHANCED EMERGENCY CONTROL:

Redesigned emergency button with improved tactile feedback to reduce false activations.

NEXT-GEN BROADBAND PERFORMANCE:

Integrated 5G / 4G LTE modem and optimized antenna enables future-proof connectivity, global coverage options, and more efficient operation.

INTUITIVE USER EXPERIENCE:

Updated UI delivers a cleaner, more intuitive look and feel for faster adoption and reduced training burden.

FIPS 140-3 LEVEL 3 ADVANCED SECURITY:

Tamper-proof and authentication-based encryption delivers ironclad security against adversaries.

ACCESSORY CONTINUITY:

Backward compatible with existing XL-Converge accessories, protecting current investments and simplifying device upgrades.

Form Factor and Design



- Built from the same trusted form factor of the XL-200P
- Hardened sub-assemblies for enhanced durability
- Voice of the Customer design enhancements
- XL-Converge software feature and accessory compatibility

Feature Availability



Capability	Available at Launch	Description
LTE	✓	Provides seamless interoperability with nationwide LTE networks, expanding coverage and enabling integration with public and private broadband services.
5G	✓	First to market with 5G-P25 convergence, enabling future-proof performance, reduced power consumption, increased throughput, 3GPP Rel 17 NTN connectivity.
Private LTE Support	✓	Expands into private LTE markets (e.g., B106, B48), enabling utilities, enterprises, and government agencies to deploy secure and dedicated broadband networks.
NTN Satellite Support	✓	First to market. Enables communications in remote or infrastructure-challenged areas, ensuring users stay connected even when terrestrial networks are unavailable.
Smart Roaming	✓	Seamlessly transitions between P25, 5G, Wi-Fi, and Satellite, ensuring uninterrupted communications in coverage gaps.
Enhanced UI	✓	Provides a modernized visual design that enhances product appeal, extends lifecycle relevance, and differentiates the XL portfolio without requiring functional retraining.
Voice Commands	✓	Enables hands-free operation for high-stress or hazardous environments, improving safety and efficiency, and allowing faster access to mission-critical functions.
FIPS 140 Level 3	Hardware @ Launch Software = Q4 2026	FIPS 140-3 Level 3 security and multi-key end-to-end encryption to keep communications safe from evolving threats.
GPS over Broadband	Q4 2026	Provides real-time location sharing across LTE networks, enhancing situational awareness and coordination outside of traditional LMR limitations.

Features Overview



- ALL CURRENT FEATURES AND CAPABILITIES OF XL-200P
- ADVANCED 5G BROADBAND CONNECTIVITY
- INTEGRATED SATELLITE COMMS
- SMART ROAMING
- FIPS 140-3 LEVEL 3
- VOICE COMMANDS
- UI REFRESH
- FIELD-FIRST DESIGN ENHANCEMENTS
- GPS OVER BROADBAND



Advanced, Future-Proof, 5G/4G LTE Broadband Connectivity



FIRST TO MARKET 5G

- The future proof connectivity option
- Better coverage with access to 5G & 4G LTE infrastructure
- Optimized performance

Only L3Harris!



Private LTE



SUPERIOR FLEXIBILITY

- **Carrier agnostic:** Certified on Verizon / AT&T / T-Mobile / Southern Linc / Telus / Telstra
- **Global connectivity:** Widest range of 5G & 4G LTE spectrum support
- **Private LTE:** B106, B48, B26 and MCX support

Only L3Harris!



SEAMLESS INTEGRATION

- Best-in-class P25/5G/4G LTE/Wi-Fi/SAT Smart Roaming: ~6s network transition time
- XL-Virtual and MCPTT solutions for PTT over Broadband
- Broadband-enabled programming, encryption key loading, & location tracking

Only L3Harris!

The XL-300P offers the PREMIER converged experience on the market

Single Device, Global Reach

CONNECT ANYWHERE, ANYTIME:

Connect to 5G and LTE networks across the globe for reliable data access wherever your mission takes you.

CARRIER-AGNOSTIC FLEXIBILITY

Operate across multiple networks and regions without region-specific hardware.

INTEGRATED NTN SATELLITE COMMS

Seamlessly extend connectivity beyond terrestrial coverage using LEO satellite networks.



“SMART” applications aren’t so smart without connectivity

Only L3Harris!



L3Harris XL-300P

5G / 4G LTE as a Standard Feature

Satellite NTN support

6s network transition

Dual SIM

Carrier flexibility

Global connectivity

Supports 37 5G / 4G LTE Bands

Removable SIM card

BROADBAND

Category	3GPP Release 17 5G NR Sub-6 LTE Cat 4
5G Bands	n1, n2, n3, n5, n7, n8, n12, n13, n14, n25, n26, n28, n40, n41, n48, n66, n71, n77
LTE Bands	B1, B2, B3, B4, B5, B7, B8, B12, B13, B14, B25, B26, B28, B40, B41, B48, B66, B71, B106.
Carrier Certification	FirstNet®, AT&T, Verizon, T-Mobile, Southern Linc, Telus, Telstra

THE BEST CONNECTIVITY AND BEST VALUE ON THE MARKET!

Native, Integrated, Satellite Support

Extending PTT Connectivity Beyond Terrestrial Coverage

Only L3Harris!



FIRST TO MARKET: INTEGRATED SATELLITE SUPPORT

aka Non-Terrestrial Network (NTN), Direct-to-Device (D2D), or Direct-to-Cell (DTC).

This is NOT a radio connected to a satellite-connected router.

This is built into the radio, which connects directly to the Starlink LEO satellite constellation.



INITIAL DEPLOYMENT:

- T-Satellite support: **requires T-Mobile SIM and data plan (future BMS offering)**
- Available in Continental U.S., including Puerto Rico, Hawaii and parts of southern Alaska.
- Feature set still awaiting approval, will provide critical services only.
- Will require PTT over broadband: XL-Virtual or MCX.

LOOKING TOWARDS THE FUTURE:

- Extended carrier support (Verizon, AT&T, Telstra, etc.), both domestic and internationally.
- Bolstered connectivity as Starlink (and others) launch more satellites into orbit.



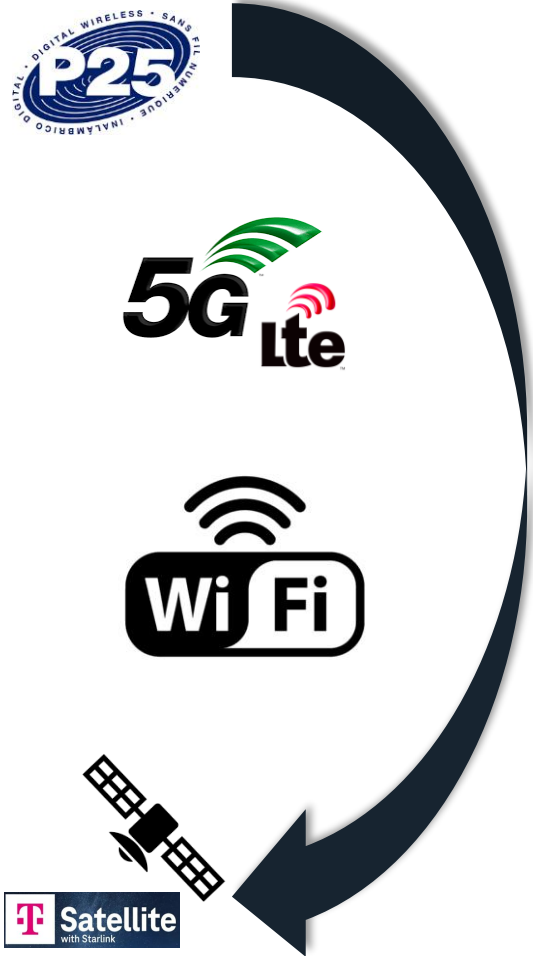
GLOBAL PARTNERS ACROSS FIVE CONTINENTS

Cellular providers using Direct to Cell have access to reciprocal global access in all partner nations.

T-MOBILE (USA) >	ONE NZ (NEW ZEALAND) >
OPTUS (AUSTRALIA) >	KDDI (JAPAN) >
TELSTRA (AUSTRALIA) >	SALT (SWITZERLAND) >
ROGERS (CANADA) >	ENTEL (CHILE) >
	ENTEL (PERU) >
	KYIVSTAR (UKRAINE) >
	VM02 (UK) >
	AIRTEL AFRICA (NIGERIA) >

Smart Roaming

Available on all XL Radios via Wi-Fi or LTE



- Uninterrupted connectivity with seamless roaming between P25 / 5G / 4G LTE / Wi-Fi / and Satellite networks
- Best in class **~6s** roaming compared to Motorola SmartConnect **20-30s** roaming
- Enhance indoor coverage and minimize dead spots

No additional feature license required

Device Management Framework (DMF)

Available on all XL Radios via Wi-Fi or LTE



To program 1 Radio Manually:

30-60 Minutes

\$75-\$100

Takes the devices out of service for half of a day

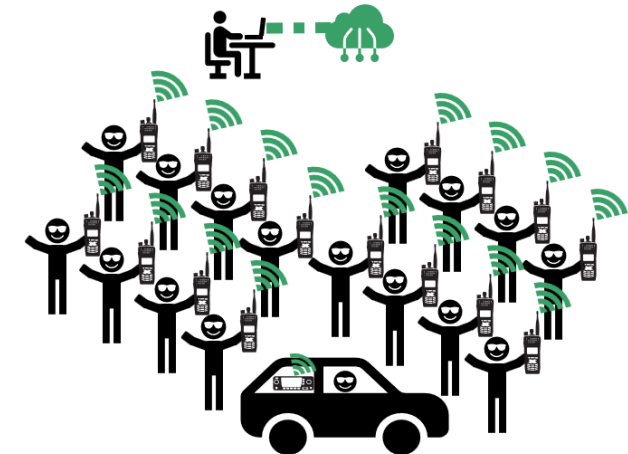


To program 1-10,000 Radios with DMF:

30-60 Minutes

\$0

No need to touch any devices. Save time and \$\$\$.



Every XL-300P ships with free 1-year DMF Subscription

OTAR over Broadband

Available on all XL Radios via Wi-Fi or LTE



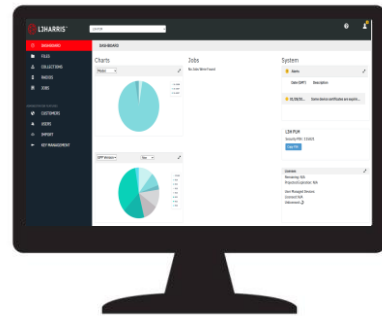
Encryption and provisioning without touching the radio:

- Save time and money
- No physical keyloader required
- Requires L3Harris KMF

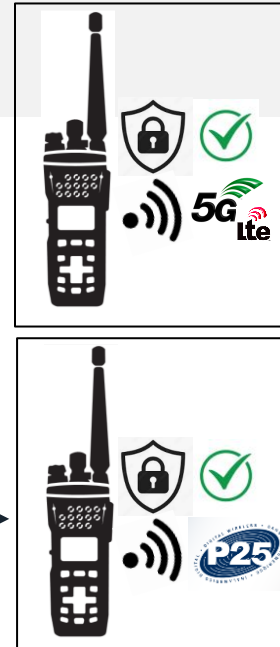
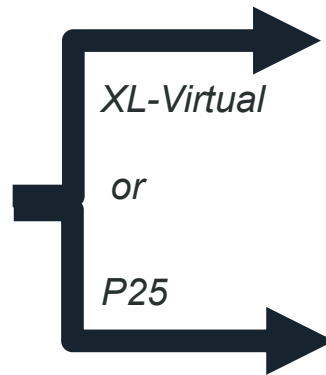
Only L3Harris!



1. Create UKEK



2. Load UKEK via DMF



3. Radio receives OTAR via XL-Virtual or P25

The L3Harris system is smart enough to know what network to send the keys over

GPS over Broadband

Available on all XL Radios via Wi-Fi or LTE



Transmit real-time location over broadband 5G/LTE/Wi-Fi networks, independent of LMR coverage or infrastructure constraints.

- Off-loads requirement for a dedicated P25 channel for location data
- Runs in the background, over the broadband network, while connected to P25
- Location data beyond LMR boundaries, including in-building and beyond coverage
- Improves situational awareness and officer safety, allowing faster location polling and lower latency

INITIAL DEPLOYMENT:

- Requires L3Harris infrastructure
- GPS Location sent to StatusAware server
- Available Q4 2026

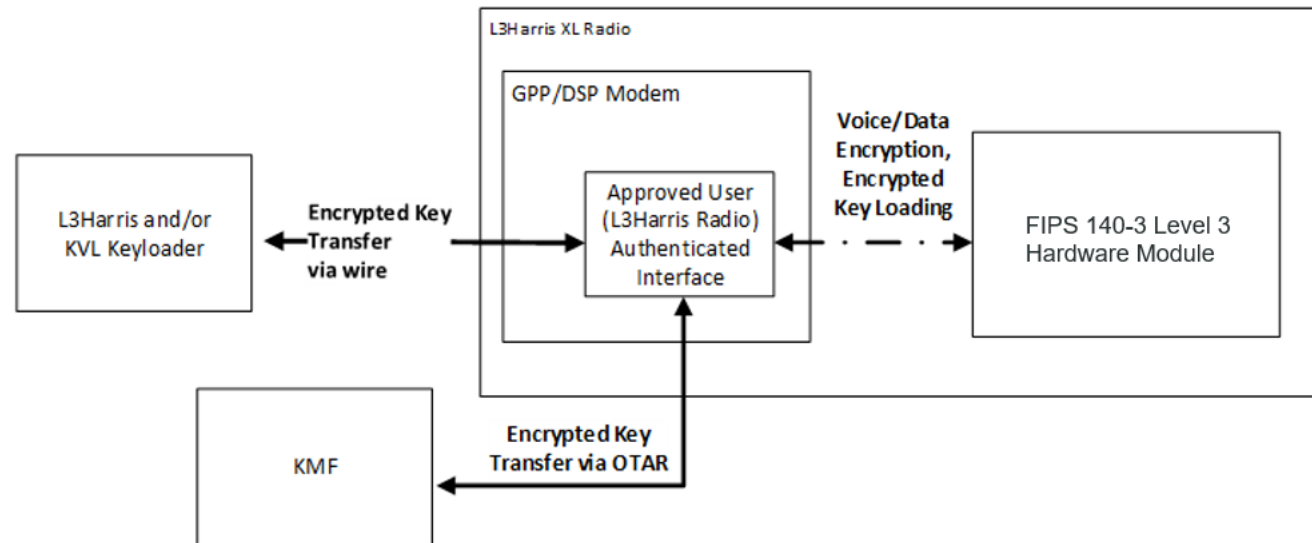


Elevating Mission-Critical Security: FIPS 140-3 Level 3



FIPS 140-3 Level 3 is the mandatory benchmark for federal and high-security organizations.

- Dedicated hardware encryption module
- Active tamper resistance
- Environmental Failure Protection
- Identity-based authentication
- Secured Key Management



XL-Assist: Voice Enabled Commands



THE PROBLEM: Maintaining situational awareness while controlling the radio

THE SOLUTION: Intelligent voice control

- **Eyes-Up, Hands-Free:** Perform essential functions while maintaining full situational awareness
- **Built for Action:** Embedded offline commands, optimized to recognize commands in high-noise environments
- **Diverse Interaction:** Activated via **wake word** or button; **adapts to regional dialects**



Channel Selection	<i>"Switch to Zone 2 Channel 1"</i>
Volume Control	<i>"Volume Max"</i>
Operational Control	<i>"Scan On"</i>
Status Checks	<i>"Battery Status"</i>

Modern & Intuitive User Interface



Full Keypad

Integrated Keypad

XL-200P	XL-300P

Simplified Icons
Improved Visibility
Reduced Clutter

XL-300P Price Summary



XL-300P List Price:
\$4,995



XL-300P STANDARD FEATURES:

- P25 & Analog Conventional
- Bluetooth
- GPS Location
- Wi-Fi client and Wi-Fi Hotspot
- Mandown
- Noise Cancellation & Echo Reduction
- Voice Annunciation & Call Playback
- Smart Roaming
- 5G/LTE

Current XL Converge software features and accessories are compatible with the XL-300P and will maintain the same list price.

The premium converged platform with the best value on the market!



XL-Converge Comparison



CATEGORY	SPECIFICATION	300P	200P	185P
Air Interface	LMR Multi-Band (VHF, UHF, 7/800)	✓	✓	✗
	LMR 900Mhz	✗	✗	✓
	P25 Trunking / P25C / Analog Conventional	✓	✓	✓
	EDACS Trunking	✗	✓	✓
Broadband	LTE Capable	✓	✓	✓
	5G Capable	✓	✗	✗
	SATCOM Capable	✓	✗	✗
	BeOn / XL-Virtual / MCPTT Capable	✓	✓	✓
	Over-the-Air Programming (DMF)	✓	✓	✓
	MCPTT	✓	✓	✓
	Smart Roaming	✓	✓	✓
	GPS over Broadband	✓	✓	✓
Security	Multikey AES/DES Encryption	✓	✓	✓
	Over-the-Air Rekeying	✓	✓	✓
	FIPS 140-3	Level 3	Level 1	Level 1
Operation	Voice Commands	✓	✗	✗
	Noise Cancellation & Echo Reduction	✓	✓	✓
	Voice Annunciation	✓	✓	✓
	Drop Shock (1.5m onto concrete)	✓	✓	✓
	Standard GPS, Bluetooth and Wi-Fi	✓	✓	✓
	Standard 5G/LTE	✓	✗	✗
	Enhanced Front Display UI	✓	✗	✗
	Intrinsically Safe Option	C1D2	C1D1 & C1D2	C1D1 & C1D2
	MIL-STD	810H	810G	810G
	IP Dust and Immersion Rating	IP68	IP68	IP68

Additional Details:

- All current XL-Converge accessories are forwards compatible with XL-300P.
- All current XL-Converge software features will be available for XL-300P.
- XL-300P will have a unique software build (.3pk) and is not compatible with .hpk or .lpk firmware.
- New add-on software features include:
 - FIPS 140-3 Level 3
 - Voice Commands
 - Satellite NTN
 - GPS over Broadband
- RPM2 R25 will be the first version of RPM2 to support XL-300P programming.
- Radio programming done the same as current XL Converge radios.

XL-300P Model Details



MODEL: XD-PFM3M-5G / PORTABLE,XL-300P,FKP,BLK,5G

NEW ADD-ON SOFTWARE FEATURES:

Feature	Code	Availability	List Price
Satellite NTN	XD-PL6N	Launch	\$375
FIPS 140-3 level 3	XD-PL6M	Q4 2026	\$275
Voice commands	XD-PL6P	Q4 2026	\$325
GPS over broadband	XD-PL6F	Q4 2026	\$330

NEW T-MOBILE BROADBAND MANAGED SERVICE (BMS) PLANS:

- T-Mobile Commercial
- T-Priority w/ T-Satellite

Available mid-late Q2 2026

XL-300P maintains continuity with most XL-Converge software features and accessories.

XL-300P maintains the same Standard feature set as XL-200P.

XL-300P includes the 5G/LTE features as STANDARD.

1 Model
1 SKUs

XL-300P

Black

Integrated
Keypad

Standard

14038-1030-01
XD-PFM3M-5G



XL-300P Web Page and Sizzle Video



Home > Capabilities > XL Converge™ 300P Multi Network Portable Radio

BACK TO SEARCH RESULTS

XL CONVERGE™ 300P MULTI-NETWORK PORTABLE RADIO

Built for Today's Frontline. Ready for Tomorrow's Mission.

Future-proof, rugged and reliable, the XL-300P is built around a simple truth: coverage is king. By converging LMR, 5G broadband, Wi-Fi* and satellite networks, the XL-300P delivers seamless communications across any network in a single hardened device.

ON THIS PAGE

EXPLORE MORE DOWNLOADS

CONTACT US

<https://www.l3harris.com/all-capabilities/xl-converge-300p-multi-network-portable-radio>

WHEN THE MISSION
DEMANDS MORE

<https://vimeo.com/1166382907?fl=pl&fe=cm>

A police officer in tactical gear, including a black cap, sunglasses, and a vest with a badge, is speaking into a handheld radio. He is standing outdoors, possibly at a crime scene or training area, with other officers and vehicles visible in the background. The scene is brightly lit, suggesting daytime.

THANK YOU!